

March 2023



CLARION
HOUSING

Ravensbury regeneration update

Welcome to the Ravensbury regeneration update. In this issue you can read more about the next phase of the regeneration including the significant improvements and plans for landscaping the estate.



Second phase is underway

We are making good progress with the second phase of regeneration in partnership with our contractor Henry Construction and the London Borough of Merton. You will see lots of activity on site during this phase which will provide 54 new homes, a mixture of one, two and three bedrooms, for existing residents.

Demolition work is complete and the building structures are in place. We have also made some temporary changes to the site boundary which

affects public access to the footpath and road on Rutter Gardens. This is to secure the area, keep residents safe and allow safe site access to large vehicles.

The footpath will be closed until phase 2 works are complete and until then residents have two alternative walking routes to Morden Road. Residents can reach Morden Road by Ravensbury Grove or take the path in Ravensbury Park, behind the homes in phase 1.

Greener Ravensbury

Landscaping plans for your neighbourhood



Sustainable Urban Drainage (SUDs) will be introduced to provide green space and colour along the length of the new streets. SUDs also protect homes from any future flooding, as well as providing safe and attractive places to play and sit out.



The SUDs will be planted in layers with trees alongside a wide variety of plants including witch hazel, iris, cow slip and hemp.



The bioswale will serve a drainage function and enhance biodiversity through a range of planting.

Many of the lovely trees already found in Ravensbury will be retained in improved settings.



Morden Hall Park

Morden Road

Ravensbury Grove

Ravensbury Park

Hengelo Gardens

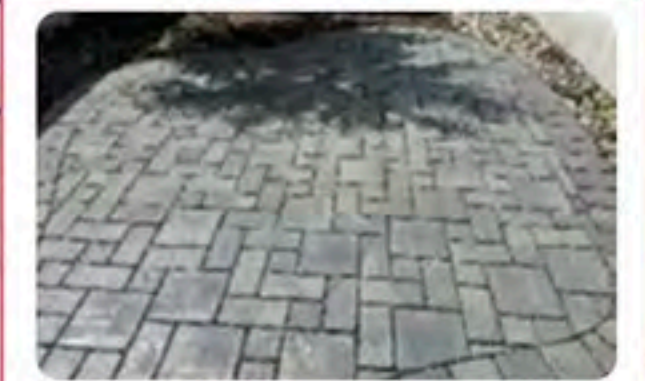
Phase 1



A new parade of trees will run the whole length of Ravensbury's Morden Road edge. Ginkgo trees have been chosen for their beauty and their suitability in this busy location.

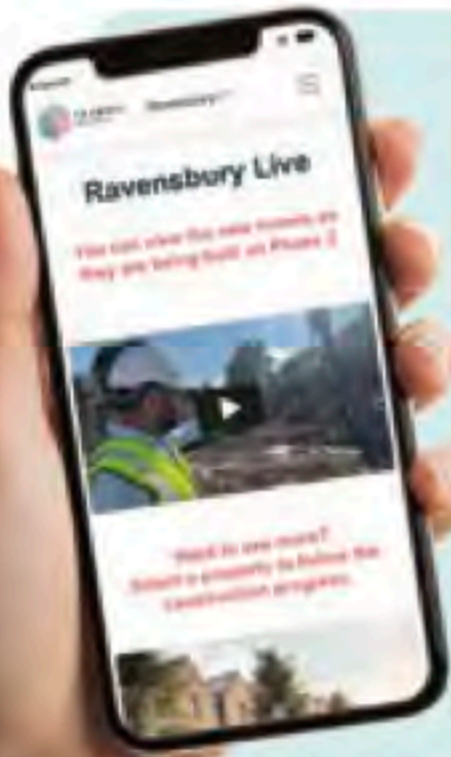


A new community rose garden. An important addition to Ravensbury, well located between Ravensbury Court and the new community centre.



Permeable paving will help rainwater soak back into the ground and not lie on the surface.

Ravensbury next steps



Ravensbury Live returns

Back by popular demand we've relaunched Ravensbury Live so you can follow the progress of your new homes from your computer, tablet or smartphone. The videos include virtual tours of the site, updates about the building work and the materials used.

Visit ravensburylive.com to register and receive regular construction updates or use your smartphone to scan the QR code above.



Calling all nature lovers

We're looking to run a series of free family friendly workshops over the summer months.

We'd like to hear your views on the type of workshop that interests you. From the list below please pick the top three workshops you'd like to attend and email your preferences to consultation@clarionhg.com by **26 March** titling the email **Green Workshop**. The purpose of the survey is to get an idea of interest, we will update you about the workshops when we analyse the results.

NO.	CHOOSE A WORKSHOP
1	How to reduce food waste by making compost and propagating new plants
2	Wildlife friendly planting and gardening
3	How to grow your own mushrooms and take home a 'grow your own' kit
4	Grow your own herbs
5	Make your own herbal tea blends
6	How to make natural dyes and inks out of everyday materials. Learn eco printing techniques to create beautiful patterns
7	'Guerrilla gardening' and how to make your own seed bombs and paper seed pots
8	How to keep your houseplants happy, and learn how to create a kokedama 'hanging basket'
9	None of the above interests me, I won't be attending



If you have any questions about the regeneration, please contact your Regeneration Manager, **Farrida Deen** on email Farrida.Deen@clarionhg.com.

Find out more about Ravensbury at: myclarionhousing.com/ravensbury

